





## Constantine Road, Hampstead NW3

---

A stunning 3 double bedroom triplex, with wood floors throughout and a fabulous South facing roof terrace, moments from Hampstead Heath.

Set over the first, second and third floors of a Victorian house the flat has been refurbished to a very high standard, with beautiful features including original fireplaces, cast iron radiators, custom joinery, roll-top bath and bespoke kitchen.

26' reception • open to a 17' eat-in kitchen • 17' master bedroom & ensuite bath/shower room • 2 double bedrooms (one with ensuite WC) • family bathroom • 18' south facing roof terrace • residents permit parking • EPC rating D

The property is situated in the Mansfield Conservation Area, a popular family neighbourhood with Hampstead Heath less than 300 ft (90m). South End Green is a short stroll, with a great mix of cafes, gastro-pubs, neighbourhood restaurants, independent shops and Marks & Spencer.

Hampstead Heath (London Overground Station) is less than a 5 minute walk & travel to Canary Wharf requires just a single change. The nearest London Underground station, Belsize Park (Northern Line), is 0.5 miles - approximately a 9 minute walk. There are also frequent bus and night bus services from South End Green.

---

£775 per week. Unfurnished.









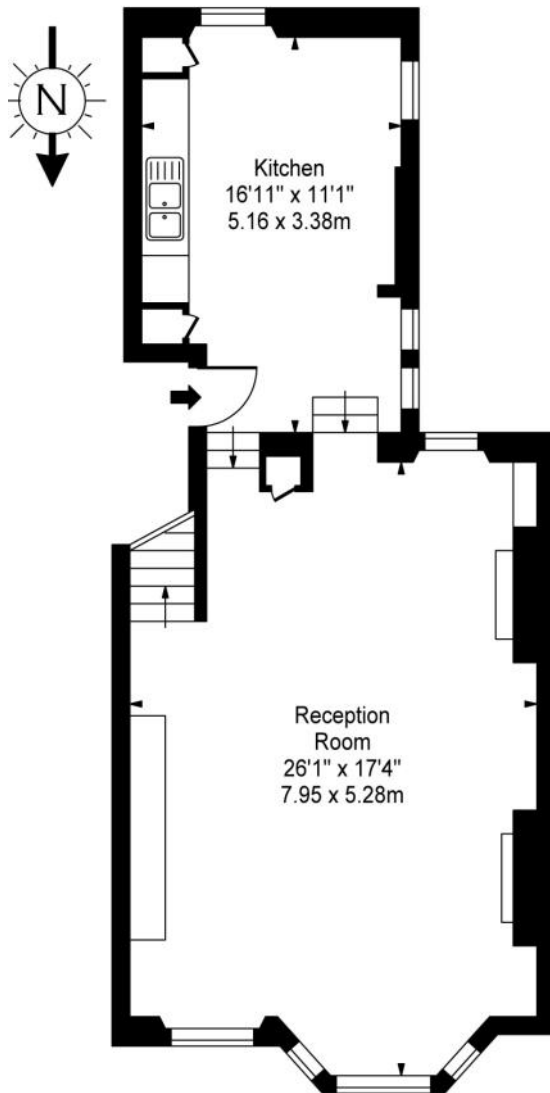




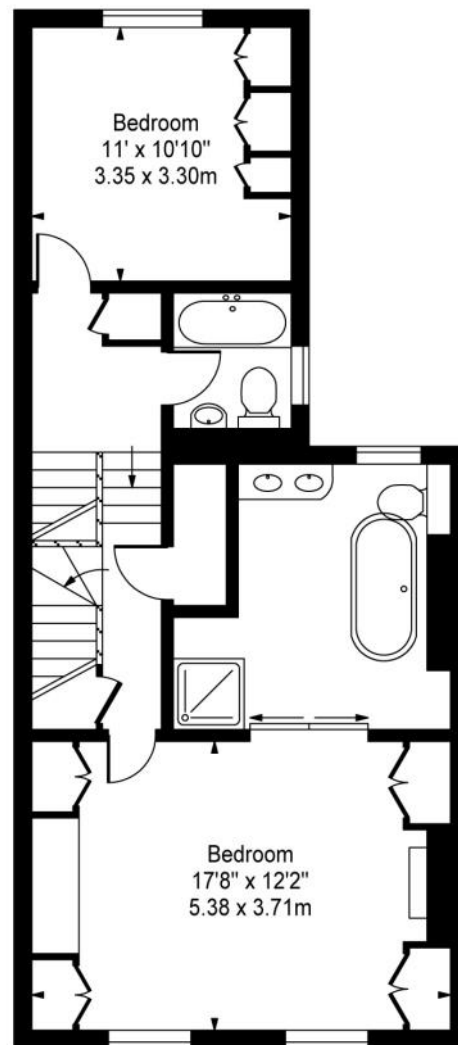




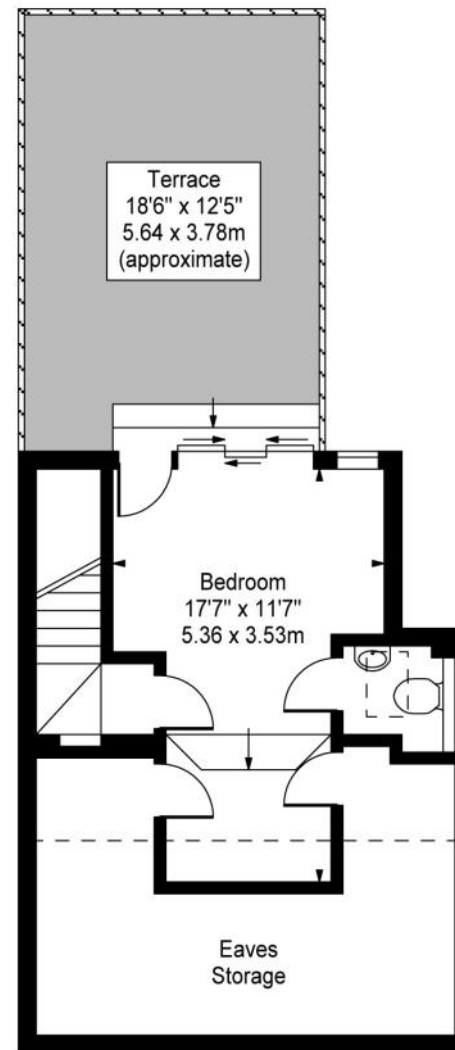




First Floor



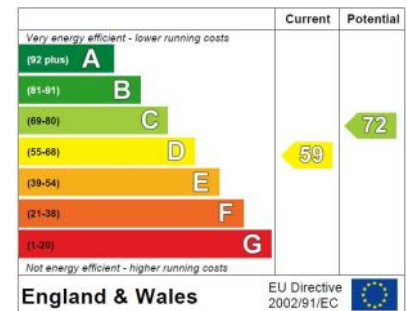
Second Floor



Third Floor

Approx. Gross Internal Area  
**1,636 Sq Ft - 151.98 Sq M**  
 Incl restricted heights

**For Illustration Purposes Only - Not to Scale - by Datagraphy**  
 This floor plan should be used as a general outline for guidance only. Any intending purchaser or lessee should satisfy themselves by inspection, searches, enquiries and full survey as to the correctness of each statement. Any areas, measurements or distances quoted are approximate and should not be used to value a property or be the basis of any sale or let.



Telephone 020 7794 7794

6 South Hill Park, London NW3 2SB | lettings@amberden.co.uk

